

procurement *matters*

Social value - What does it mean to you?

In this edition the spotlight is on
social value and what it means
within the public sector.

What's Inside...

What is social value in public sector procurement?	2
Here comes the sun!	4
Integrated Community Care Equipment framework	4
Electrifying the bus network	5
Sharp – Employee Volunteering Programme	6
Ryefield Books: Read, Relax & Reboot	7
Prioritise your mental health	8
Employee Support Services & Benefits framework	9
My Apprenticeship with KCS Procurement Services	9
How to deploy a sustainable ICT strategy in the public sector – Circular Computing	10
New frameworks	10

What is **social value** in public sector procurement?

The ‘Public Services Act 2012’ defines how public sector organisations have a duty “to have a regard to economic, social and environmental well-being in connection to public services contracts”. Do you want to learn more about the Act, visit <https://www.legislation.gov.uk/ukpga/2012/3/enacted>

Social Value at KCS Procurement Services

Social value is an increasingly important way in which we look to support our customers and communities throughout the UK. Our frameworks are created to deliver products and services across the public sector, from hospitals to schools, local councils to care homes, we provide access to suppliers who can help make a difference.

Social value is now given a 10% weighting within every single new framework, so we can be certain that we are awarding suppliers who are committed to contributing to communities.

OUR CUSTOMER PROMISE

“Bringing honesty and innovation to every one of our customers – enabling them to make a real difference to their community.”



Social Value at Commercial Services Group

Being wholly owned by Kent County Council means that Commercial Services Group, through dividends, supports front line services – this in turn helps to support the people of Kent who are most in need. Innovative joint ventures and partnership models allow CSG to drive the future of further social value benefits in other communities across the UK.



SPOTLIGHT FEATURE

The UK's Social Value Themes



COVID-19 RECOVERY



TACKLING ECONOMIC INEQUALITY



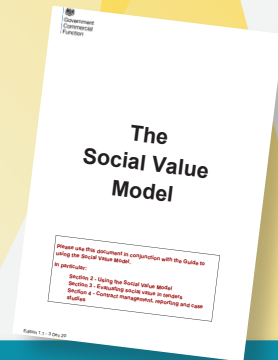
FIGHTING CLIMATE CHANGE



EQUAL OPPORTUNITY



WELLBEING



Want to know more about evaluating social value in tenders? Download the UK government Social Value Model here



Want to know more about social value at Commercial Services Group - click here

Steve Wilson (Commercial Director) Statement

“

For me Social Value is one of the main reasons I do the job I do. Through the creation of public owned joint ventures, CSG and our partners can integrate the delivery of social value into the very core of the companies we set up. The ability to provide value to local communities, not just through the generation of a surplus, for reinvestment in frontline services, but through actual engagement and development activity is extremely rewarding.

The fact that CSG has now gone a step further, by creating a dedicated Social Value team is testament to how seriously we take Social Value.

As a large and growing organisation, we have a significant ability and resource, to deliver meaningful contributions to our local communities.

The enthusiasm of the team is, like Social Value itself extremely infectious and we look forward to sharing regular updates on the Groups progress.”

”



Here comes the sun!

LASER Energy, a sister division of KCS Procurement Services, and Kent County Council (KCC) have acquired a new 38 hectare (94 acre) solar farm in North Somerset.

The Bowerhouse II Solar Farm has the capacity to have 39,312 solar panels and will provide 22,000 megawatt hours of green electricity to the grid a year – a huge stride forward in reducing carbon emissions whilst saving energy costs for KCC.

[Click here to find out more](#)



Making a difference to communities

A recent Government white paper from the Department of Health & Social Care has outlined proposals for health and care integration. The white paper explores the “need to do more to bring the resources and skills of both the NHS and local government together to better serve the public.”

[Read the plans set out to join up care for people, places and populations in the full white paper](#)

Supporting communities around the UK is at the heart of our values. Our Integrated Community Care Equipment framework has been developed to deliver simple solutions which will help people with everyday activities. The framework covers a full range of daily living health and social care equipment, with a focus on:



FURNITURE



MOBILITY



FACILITIES

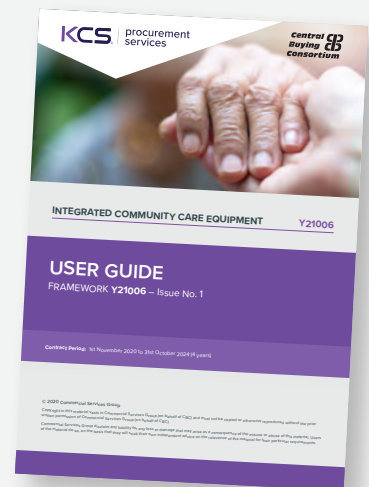


CUSTOMER CARE



THERAPY

“Everyone should receive the right care, in the right place, at the right time.”



Do you want to learn more or access the framework? Visit <https://www.kcs4ps.co.uk/icce>

Electrifying the bus network



The introduction of electric buses is being welcomed across the country and a significant investment has been made by Kent County Council, with £9.5 million of funding confirmed, which will electrify KCC's Fastrack fleet..

The investment from the Department for Transport's ZEBRA fund will directly impact the Kent Thameside network and the new Dover Fastrack service arriving in 2023. This will be Fastrack Kent's first zero-emission bus service.

[Read more](#)



Investment in bus networks

The UK government has announced a levelling up in the improvements to bus networks, with £150 million funding to support public transport.

[Read more](#)

[Read the full National Bus Strategy here](#)

Electric Vehicle Charging Point framework: Bus Charging Solutions

KCS Procurement Services provides an Electric Vehicle Charging Points framework which includes a LOT specifically focussed on delivering Bus Charging Solutions. The services covered include feasibility studies, associated services, installation & deployment and service & maintenance (including pantographs).



[Find out how to access our framework and improve your zero carbon emission infrastructure](#)

Employee Volunteering Programme

At Sharp, we believe that by volunteering our time, our people can help to make a huge difference - giving just a few hours can have incredible potential to make an impact. So we provide 300 paid volunteering days each year, as part of our Employee Volunteering Programme (EVP). Any employee can apply for paid time to volunteer to help a charity or community project. Our people undertake various activities to help others, from dog walking to helping at food banks.



Click on this cover to read the PDF

Sharp is an awarded supplier on our MFD and AV frameworks, to discover more about Sharp visit our website

To contact Sharp directly:
 Lois.Hillam@sharp.eu
<https://www.sharp.co.uk/gb>

Sharp Business Systems

Corporate & Social Responsibility

#WeAreSharp

www.sharp.co.uk



SHARP
Be Original.

Social Values Policy

Through collaboration with their supply chain, Ryefield Investments Limited is committed to:



EMPLOYMENT AND SKILLS



LOCAL BUSINESS & ECONOMY



COMMUNITY ENGAGEMENT



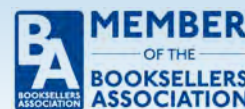
ENVIRONMENT



GOVERNANCE, MEASUREMENT & REPORTING



Read, Relax & Reboot



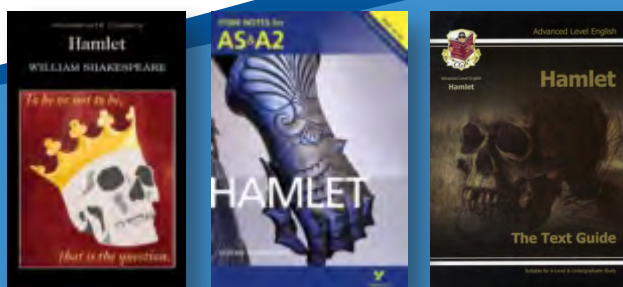
Ryefield Books is part of Ryefield Investments Limited. We've been in the books business for a decade now. We are now an awarded supplier for KCS Procurement Services.

Even with the progress in various technologies, nearly 72% of people in the UK still prefer to read hard copy books. They are also convenient in schools, academic institutions, and other learning centres. Despite the advent of many electronic reading tools, physical books are here forever.

This is where we step in.

Our vision is to cultivate healthy reading habits and increase general knowledge amongst the entire populace. We supply books from all categories and genres for all demographics.

ARTS	MEDICINE AND NURSING
BIOGRAPHY AND TRUE STORIES	HISTORY AND ARCHAEOLOGY
LANGUAGE AND LINGUISTICS	MATHEMATICS AND SCIENCE
BIOGRAPHY, LITERATURE AND LITERARY STUDIES	PHILOSOPHY AND RELIGION
ENGLISH LANGUAGE TEACHING (ELT)	EARTH SCIENCES, GEOGRAPHY, ENVIRONMENT, PLANNING
FICTION AND RELATED ITEMS	SPORTS AND ACTIVE OUTDOOR RECREATION
REFERENCE, INFORMATION AND INTERDISCIPLINARY SUBJECTS	TECHNOLOGY, ENGINEERING, AGRICULTURE, INDUSTRIAL PROCESSES
HUMANITIES	COMPUTING AND INFORMATION TECHNOLOGY
SOCIETY AND SOCIAL SCIENCES	HEALTH, RELATIONSHIPS AND PERSONAL DEVELOPMENT
ECONOMICS, FINANCE, BUSINESS AND MANAGEMENT	LIFESTYLE, HOBBIES AND LEISURE
LAW	GRAPHIC NOVELS, COMIC BOOKS, CARTOONS
	CHILDREN'S, TEENAGE AND EDUCATIONAL



Our database is constantly increasing to satisfy all our customers. Please always write to us with the books' ISBN if your search leads nowhere. We are here to help in any way we can.

People are changing their ways from making a new library to adding the latest hard copies on the shelf. Being an awarded supplier, we feel a greater responsibility towards our readers and institutions. And we are here to lend a helping hand.

From the company founder,

"I have always been an avid reader and love to explore the world of books in my past time. Books have always been an essential part and a great company in my life, and they have guided me towards a good path. My understanding of the importance of books leads to spreading the habit of reading among people. There are many quotes on how books are helpful and how and why they are essential. I want to say that books show the past, present and future, all wrapped up in a few pages."

An awarded supplier on the Books & Downloads framework.

[Access them here](#)

corporatesales@ryefieldbooks.com • www.ryefieldbooks.com

Blog

Prioritise your mental health

Work-related stress is very dangerous and long term it might lead to mental health problems such as serious anxiety or depression. The problem is real and as an example a study in 2022 by Infinite Potential states, in 2021 employee burnout has increased by over 5%.

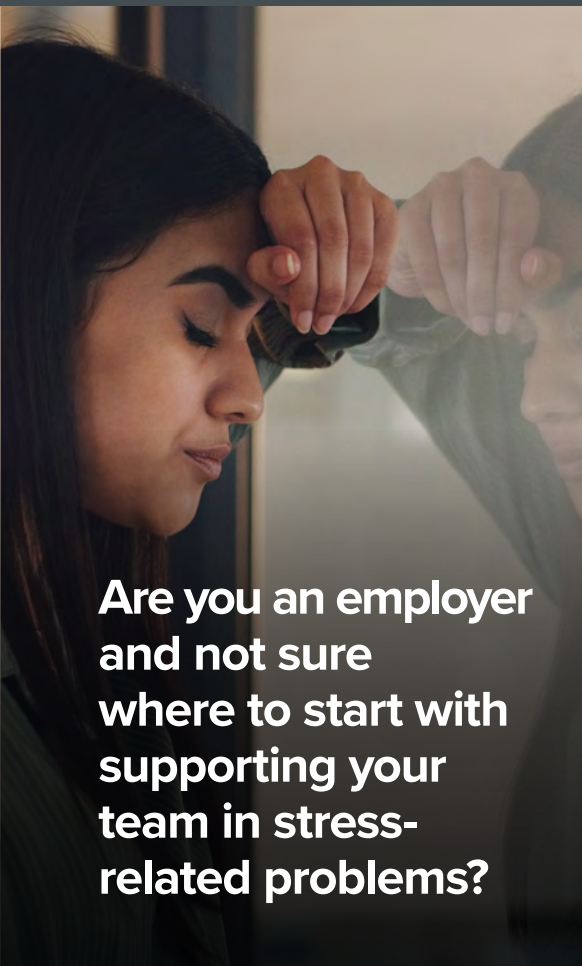


What can you do to help yourself reduce increasing stress levels?

- 1 The first and most important point here is to talk to others about the issue and not be ashamed.
- 2 Ask others to share their coping mechanisms and speak about what has worked in the past.
- 3 Another very important thing is to stay alert. Be aware of the situation and monitor how you are feeling.
- 4 If your workload is overwhelming, speak to your manager and be clear in communicating the issue, perhaps they will be able to provide additional training or help if the situation is very serious.
- 5 When it comes to workload, try to balance all the tasks. Don't do it all at once but plan, prioritise and be easy on yourself.
- 6 And remember, be realistic as nobody is perfect and putting too much pressure on yourself is never a good way out of the problem.



For more tips on how to help reduce your stress visit our blog



Are you an employer and not sure where to start with supporting your team in stress-related problems?

We can help.

We understand how important it is to take care of our employees mental health and we have created the Employee Support Services and Benefits framework to help other organisations get the expertise they need.

The awarded suppliers on our framework work closely with public sector organisations just like yours to provide services related to occupational health and work-related mental health, and are passionate about supporting people.

Access our Employee Support Services and Benefits framework here

My Apprenticeship with KCS Procurement Services



At KCS Procurement Services we are committed to supporting people get their foot on the career ladder and in this edition we highlight apprenticeships and how they can offer young people an opportunity to kick start their ideal profession.

James Finch (Website Assistant)

“Having recently passed my Digital Marketing apprenticeship, I have gained a huge amount of knowledge, experience and skills to take on a new role within the commercial team as a Website Assistant.

The work / learning balance throughout my apprenticeship was somewhat of a challenge, as I had to balance deadlines for my day to day work alongside my apprentice studies, but this enabled me to improve and develop my work



As well as learning valuable transferable skills during my apprenticeship, I also gained market knowledge and experience within the professional world of the public sector. The opportunity provided by the apprenticeship has given me a deeper understanding of how an organisation works commercially and digitally, and has helped start my career.

load balance and become more organised.

Overall my experience was positive and thanks to KCS Procurement Services for investing in people and apprenticeships I have been able to successfully launch into my career. “

Do you want to find out about career opportunities at Commercial Servies Group? Click here



How to deploy a sustainable ICT strategy in the public sector – Circular Computing

A collaborative event between KCS Procurement Services and Circular Computing took place on 7th April, with the aim to give an insight to public sector organisations about the latest Government ICT sustainability strategies.

The webinar covered everything from the impact of purchasing a brand-new unsustainable laptop to a greener second user remanufactured laptop and the CO2 emissions detailed to general e-waste.

In case you missed the recent webinar you can watch the recording here

Click here for more information on how to deploy a sustainable ICT strategy in the public sector

Circular Computing is an awarded supplier on our IT Hardware framework. Click here for further information or to access the framework.

To contact Circular Computing directly:
Steve.Haskew@circularcomputing.com
www.circularcomputing.com

New frameworks

Employee Support Services & Benefits – Y21027

The supply of employee services, support and benefits, including occupational health, Employee Assistance Programmes and employee benefits.



Managed Services for Business solutions – Y20023

The practice of outsourcing day-to-day management responsibilities and functions as a strategic method for transforming and improving business processes.



MFD & Digital Solutions - Y20031

The provision of multi-functional devices (MFDs) and digital solutions.



Communication Solutions & Associated Telephony Services - Y22007

The provision and installation of a full range of communication solutions, associated services, equipment, support and maintenance.

