

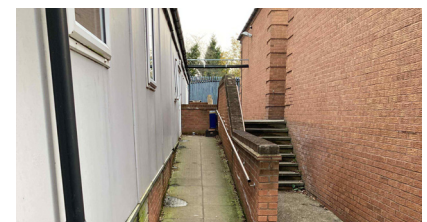
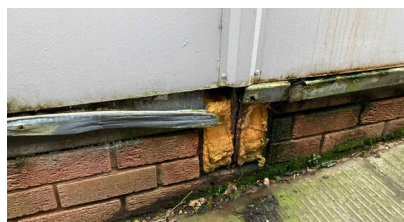
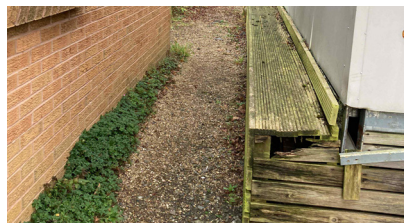
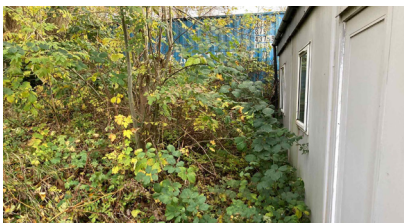


Project: Kings Norton Girl's School | **Location:** Birmingham | **Contract Type:** Hire

Overview

Kings Norton Girl's School, based in Birmingham, required a modular building to replace a previous modular structure due to a section of the building being condemned. Pickering's submitted their tender and were selected to supply a double teaching facility and staffroom as part of the school's renovation. The school successfully secured Condition Improvement Funding (CIF) working in partnership with Ridge & Partners LLP, Birmingham Office.

The project began with an application for a Section 80, as the existing building needed to be demolished based on its current state. The car park was cleared, site fenced off, and once the Section 80 approval was granted, demolition began. The foundations were cleared and replaced, all within a live school environment.



**Get In
Touch.**

 0333 300 2345

 www.pickeringshire.co.uk

 sales@pickeringshire.co.uk

 @pickeringshire

Case Study (cont.)



The new modular building features a graded access path to ensure accessibility for all, this was achieved through a reduced dig foundation design and build. The external perimeter path was given a tarmacked finish and fitted with a handrail. External lighting was chosen to deter unauthorised access and ensure safe navigation around the premises.

The building's entrance includes an automated door for easy access, complemented by a one-way privacy screen opposite to allow staff to monitor who enters the building.



The new building needed to fit within the footprint of the old one to meet planning requirements and with the ability to build bespoke size modules Pickering's were able to accommodate this. Additionally, a couple of existing ponds had to be relocated onsite to make space for the new compliant footpath to the rear of the building.

The new building is situated at the rear of the school, requiring 170 meters of electrical cable to be run from the front of the school site. The cable required routing across multiple buildings, followed by a final soft dig for connection.



Get In
Touch.

 0333 300 2345

 www.pickeringshire.co.uk

 sales@pickeringshire.co.uk

 @pickeringshire

Case Study (cont.)



Timing was critical to ensure the building was ready for use by September 2024. The school agreed to vacate the existing building in June, providing a three-month window for demolition and the construction work. The team adhered to a tight schedule, ensuring that cranes and heavy machinery were cleared before students returned. Regular meetings were held with the key stakeholders to ensure the project was delivered on time and on budget.

The school is delighted with the outcome. The new classrooms offer a high-quality modular building with suspended ceilings and improved energy efficiency, providing a modern and comfortable working environment for both students and staff.



Working with Pickering's on this project was a really positive experience. They really listened to our needs at the design stage, providing expertise and guidance to support our decision-making process. They then delivered to our required standards within the agreed timescales, all of the time understanding the importance of these elements whilst both meeting safeguarding requirements and minimising impact on the day-to-day school operation.

It was really easy to communicate with them in an open and honest fashion so that there were no surprises on the project. I, and the rest of the school team, am delighted with the finished project.

Clare Skinner, Business Manager



Get In
Touch.

 0333 300 2345

 www.pickeringshire.co.uk

 sales@pickeringshire.co.uk

 @pickeringshire